

# **FLEXTRACE® SR**

**Long line electrical tracing solution  
FOR CONSTANT PIPELINE TEMPERATURE  
OR FROST PROTECTION**



**omerin**  
QSTECHNOLOGIES  
DIVISION

# FLEXTRACE® SR

## Solidity, experience and competence

Since 1959, **OMERIN** has specialized in the design and manufacture of specialty cables and heating cables. The OMERIN international Group relies on the dynamics of its 1,700 employees.

Full expertise in manufacturing processes enables us to foresee installation issues. Our experience and our expertise in series heating cables will deliver a secure, best-fit solution to meet your project configuration.

**OMERIN** has become a cornerstone player in the heating cable solutions market. We cultivate a passion for performance and are renowned for the reliability of our products and technology solutions.

## Solutions

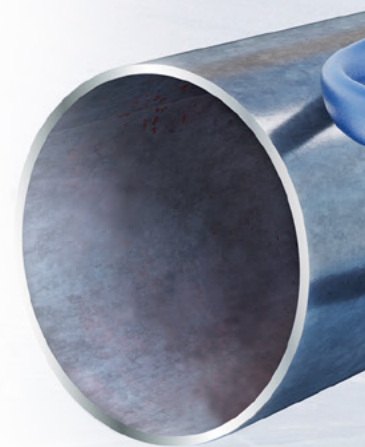
Our series tracing solution is designed to deliver a constant temperature or frost protection for pipelines, metal / non-metal ducts where circuit lengths exceed the limitations of parallel-resistance heating cables or constant wattage cables.

The **FLEXTRACE® SR** technology enables electric heat tracing for circuit lengths up to 12,000 ft with a single power supply point.

The **FLEXTRACE® SR** system and related connection kits **FLEXKIT® SR POWER**, **FLEXKIT® SR JUNCTION** and **FLEXKIT® SR END** are **UL / CSA certified**.



Master Contract N°177410  
Certificate N°70181482



## THE SERIES HEATING CABLE RANGE For pipelines up to 12,000 ft

**MAXIMUM POWER 12 W/ft**

**Cable operating temperature range -60°C / +200°C**



### FLEXTRACE® SR1

• One single-pole heating conductor with power supply at each end.

**For maximum pipeline length of 6,500 ft**

**Maximum power 7.5 W/ft**

### FLEXTRACE® SR2

• Two parallel heating conductors to make circuits with power supply and return at same point, or "2-speed" heating with power supply at each end. **For maximum pipeline length of 10,000 ft**

**Maximum power 10.5 W/ft**

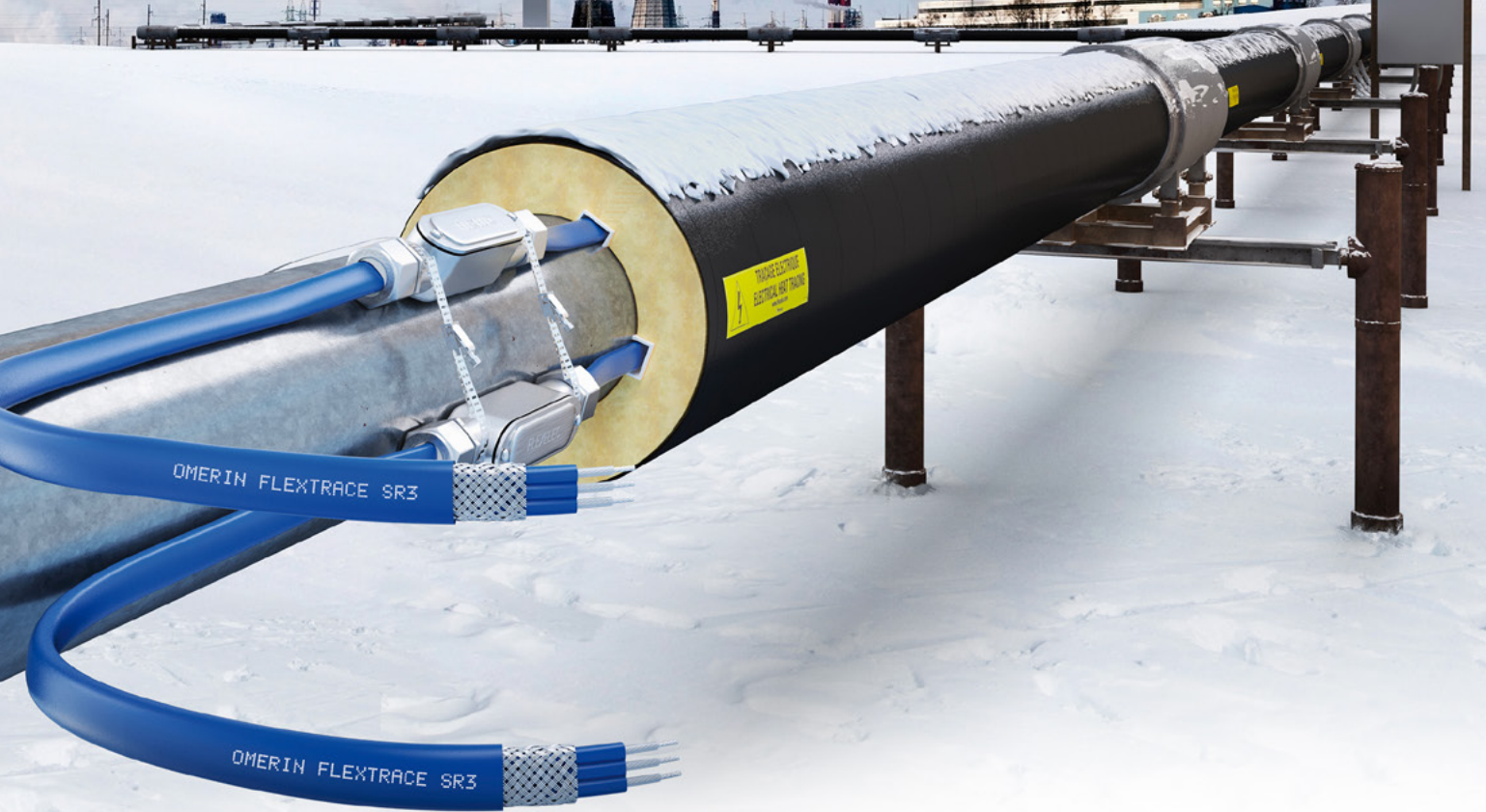
### FLEXTRACE® SR3

• Three parallel heating conductors to make 3-phase circuits with star coupling.

**For maximum pipeline length of 12,000 ft**

**Maximum power 12 W/ft**

# The solution for constant pipeline temperature or frost protection



## 3 CONNECTION KITS FOR ALL YOUR CONFIGURATIONS



### Power supply kit

#### **FLEXKIT® SR POWER**

Connects the power supply cable and the heating cable.  
Exposure temperature up to +150°C.



### Junction kit

#### **FLEXKIT® SR JUNCTION**

Connects 2 lengths of heating cables.  
Exposure temperature up to +150°C.



### Termination kit

#### **FLEXKIT® SR END**

Allows to terminate the end of the circuit.  
Exposure temperature up to +150°C.

Available in 2 sizes: **MEDIUM** and **LARGE** size depending on the cross-section of the cable used.

# Benefits of the solution **FLEXTRACE® SR**

## Efficient

- The **FLEXTRACE® SR** technology enables electric heat tracing for circuit lengths up to 12,000 ft using a single power supply point.
- It adapts to the specific configuration of your project, to the wattage and temperature required.
- Our engineers will conduct custom analysis of your project using thermal and electrical simulation tools.

## Economical

The **FLEXTRACE® SR** cable is built using conductors that prevent voltage drops and do not cause a high inrush current when switched on. The design rating of the power supply cabinet is therefore considerably reduced.

• The **FLEXTRACE® SR** solution features three **FLEXKIT® SR** connection kits for fast and easy installation, generating extensive time savings in installation.

• The three **FLEXKIT® SR** connection kits are available in two different sizes, specially designed to meet all your long-length pipeline configurations, and make stock management very simple.



## Reliable

• The **FLEXTRACE® SR** cable is extruded with a fluoro-polymer insulation which guarantees the integrity of the cable against chemical agents and external environmental conditions (weather).

• It was developed using high-temperature coefficient materials which naturally protect the equipment against short-term power surges.



### For further information, please consult:

- Technical data sheet for **FLEXTRACE® SR** heating cables
  - Technical data sheet for connection kits **FLEXKIT® SR POWER, FLEXKIT® SR JUNCTION, FLEXKIT® SR END**
- Technical data sheet for **FLEXKIT® SR** accessories
  - Installation manuals for connection kits **FLEXKIT® SR POWER, FLEXKIT® SR JUNCTION, FLEXKIT® SR END**
- Installation manuals for **FLEXTRACE® SR** solution



**For further information, please do not hesitate to contact us**

OMERIN USA, Inc. QS Technologies division  
95 Research Parkway - Meriden, Connecticut 06450  
**Phone: +1 203-237-2297**  
qstech@omerin.com



[www.omerin-usa.com](http://www.omerin-usa.com)